



 **Textile Center**
A national center for fiber art

ANNUAL REPORT
APRIL 1, 2011 – MARCH 31, 2012

Honoring textile traditions and promoting excellence and innovation in fiber art.



Letter from Executive Director

It is with great difficulty that I write this farewell letter because you have all become such wonderful friends. When we hatched the idea of a center for fiber art 20 years ago it seemed like a dream. Textile Center became a reality because of the dedicated work and support of countless people who joined me in pursuing this dream.

I look back and can say that Textile Center was worth every bit of the blood, sweat and tears that have been poured into this organization. The joys and heartache that come with founding an organization are enormous. Fortunately, every time we hit a roadblock another route opened and we accomplished what seemed to be impossible. Now, Textile Center is at a stage where I can leave confident that it will thrive and grow for decades to come.

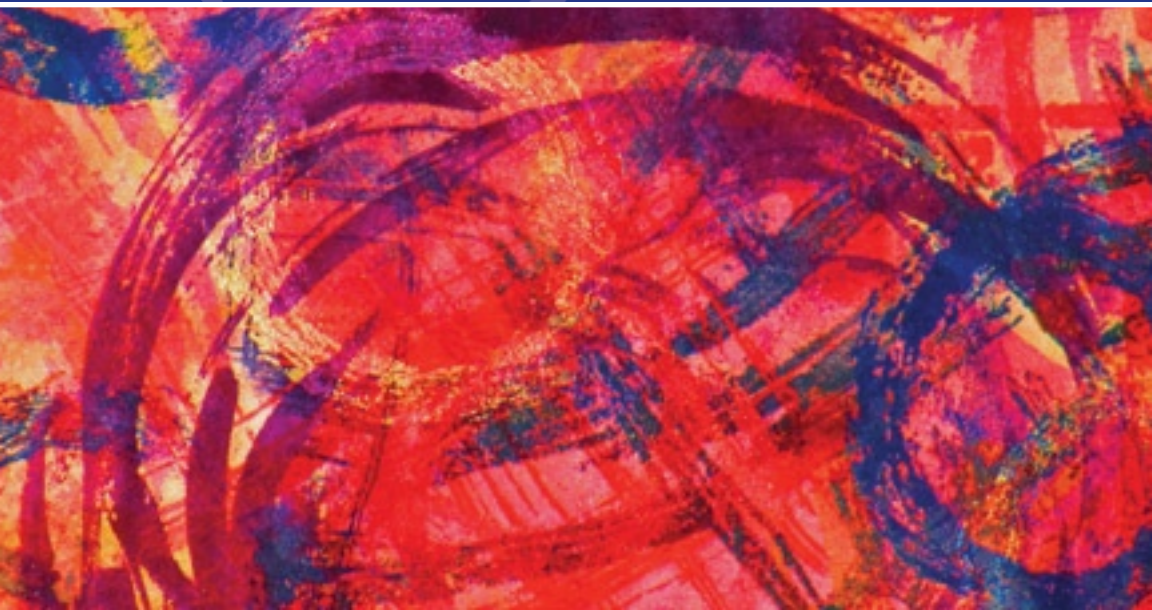
I am tremendously grateful to everyone who gave so much to make this dream come true. The heart of Textile Center remains with the many individuals whose passion and commitment to fiber art is unsurpassed. Together we have created a wonderful community of talented and skilled makers and a place for fiber art that is envied by artists far and wide. Working every day with these amazing artists has made it the best job in the world for me.

Thank you all for being part of Textile Center — and my life.



Margaret Miller
Executive Director

Margaret Miller announces her retirement. We say goodbye to an inspiring leader and offer best wishes to an extraordinary champion of fiber art.



Letter from Board President

The vibrant and creative atmosphere at Textile Center ran at a fevered pitch during this year of inspiration, planning, and transition. We co-sponsored an international fiber art conference of epic proportions; we started a journey that will grow Textile Center into a new space; and we began the process to say goodbye to our founding director and find a new executive director.

“Confluence,” an international fiber art conference co-sponsored with Surface Design Association, drew together hundreds of fiber artists from around the world to participate in an extraordinary learning event and artistic exchange. Our region was saturated with fiber art as Textile Center and scores of galleries and museums presented inspiring fiber art exhibitions in conjunction with the conference.

Light rail construction began outside our front door and we have been working closely with the Prospect Park neighborhood association and many others to envision an arts and living community that will grow near the new Prospect Park Light Rail Station. James Dayton Design created an inspiring concept for how Textile Center can expand and serve as a flagship within this dynamic urban village. Our next few years will be dedicated to transforming this exciting plan into reality.

Finally, we concluded the year preparing to say goodbye to our founding director, Margaret Miller. Margaret announced her retirement effective July 1, 2012. She is moving on to new adventures — spending a year in Sri Lanka and then literally exploring the wide world of textiles. Margaret wove together the fiber art guilds and artists that form Textile Center’s core membership. She articulated an artistic vision that has engaged and inspired thousands of individuals. She built an infrastructure and financial base that gives Textile Center a strong foundation. Margaret’s enthusiasm, creativity, and drive made the dream of Textile Center come to life. I join a grateful community in expressing my deep appreciation and best wishes to Margaret.



Ruth Stephens
President, Board of Directors



Opposite: *Looking Beyond* by Nancy Mambi from A Common Thread.

Above: Detail of *Bacchanalia* by Karin Weiss from A Common Thread.

Below: Detail of *Sixteen Days in Rajasthan* by Wendie Zekowski from A Common Thread.



EXHIBITIONS

Joan Mondale Gallery

Retread Threads: Fiber Art from Recycled Materials. The transformation of everyday materials into innovative works of art was showcased in this group exhibition juried by Lynda Erwin Andrus.

Atmospheric Measures. Clare Verstegen's screen-printed, felted works evoked the visual patterns of climate, weather and air movement to the parallel forces of emotion.

Transformation. Jane Kenyon's machine embroidery showed the confluence of shape and pattern that takes place when perspective changes from near to far.

I Am A Link: Pictorial Rugs by Dorothy Sauber (1947-2008). A selection of hooked rugs, created during the late 1970's and early 1980's, offered vivid depictions of everyday life in which Sauber saw herself and her art as a link.

Spaces Between. New works were showcased by recipients of the 2010/2011 Jerome Fiber Artists Project Grant Program: Brenda Brousseau, Kristina Fjellman, Annie Larson, and Kim Mathews.

Holiday Show & Sale. One-of-a-kind fiber art by more than 170 artists was featured in this annual holiday exhibition and sale.

A Common Thread. Diverse in materials and textile techniques, this annual exhibition featured work by 74 Textile Center members.

Constructions in Concert: Works by Joyce Melander-Dayton. This internationally acclaimed artist from Santa Fe with Minnesota roots combined weaving, sewing, embroidery, beadwork, paint and more to create exquisite large scale constructions.

Community Gallery

- Charlene & Robert Burningham, **Hallmarks**
- Minnesota Knitters Guild, **Shawls**
- Textile Center & Surface Design Association members, **Watershed**, juried by Pokey Bolton
- Artist's Circle, **Up North**
- Textile Center Youth Programs, **Better Than Recess**
- Polymer Clay Guild, **Wearables from the Oven**
- Marlene Meyer, **Fiber Art Baskets**

Pat O'Connor Library Gallery

- Lady Slipper NeedleArts Society, **Crochet Works**
- Jean Susan Hawton, **MN State Fair Fiber Art Award Winner**
- Upper Midwest Bead Society, **Beadworks**
- Diane Fitzgerald, **Beadworks**
- Monica Ferris, **Hats**

Touring Exhibitions

Land by Hand, supported by the Arts and Cultural Heritage Fund, showcased excellence and innovation in fiber art by 15 Minnesota artists working in media ranging from tapestry

to batik to silk-fusion sculptural works. The artists explored the theme of land through content, material and technique. **Land by Hand** was curated by Kimber Olson and traveled to art centers in Bemidji, New York Mills, Mankato and Lanesboro.

Focus on Fibers, featuring diverse fiber art works, concluded its multi-year tour at the Anderson Center in Red Wing, Minnesota. Textile Center also presented its annual exhibition of member work at the Minnesota State Fair.

Textile Center Shop, specializing in extraordinary fiber art created by member artists, is the only retail store of its kind in the region. The Shop presented and sold fiber art work by 175 artists and generated \$85,000 in payments to artists.

Just the Numbers — Exhibitions

26 exhibitions
625 exhibiting artists
186,000 exhibition audiences
\$151,145 art sales

Exhibitions at Textile Center's facility and on the road featured exceptional work by fiber artists from the region and around the world, showcasing both mastery in technique and innovations in fiber art.

Below & Opposite: *Merge and Flow*, Surface Design Association member exhibition at 2011 International Surface Design Conference.



EDUCATION & COMMUNITY OUTREACH

Hundreds of individuals advanced their technical and creative skills, took artistic risks, and explored new avenues of creative work through participation in Textile Center's classes and workshops. This included the introduction of classes held offsite at the American Craft Council and regional libraries. The next generation of fiber artists was nurtured through residencies in schools and outreach services across the region.

Jacquard generously sponsored need-based scholarships to students participating in Textile Center dye and surface design classes.

Textile Center partnered with Surface Design Associate to present "Confluence," an international fiber art conference in Minneapolis. More than 460 people from 12 countries attended conference presentations by internationally renowned artists. Rain didn't dampen the enthusiasm at the high energy DIY event on the University of Minnesota campus. Other conference highlights included a runway show of one-of-a-kind garments and 35 fiber art exhibitions in galleries and museums across the region, including Textile Center.

Confluence 2011 International Surface Design Conference

Exhibition Artists

| | |
|------------------------|-------------------------|
| Beth Barron | Nancy MacKenzie |
| Sonja Berlovitz | Bernadette Mahfood |
| Sandra Brick | Avigail Manneberg |
| Charlene Burningham | Kelly Marshall |
| Jiyoung Chung | Kimber Olson |
| Morgan Clifford | Dina O'Sullivan |
| Randy Darwall | Barb Otto |
| Nancy Eha | Teresa Paschke |
| India Flint | Christine Pradel-Lien |
| Mary Edna Fraser | Carol Premack |
| Ruth Mordy Friedlander | Jason Pollen |
| Linda Gass | Erica Spitzer Rasmussen |
| Leah Golberstein | Ann Hall Richards |
| Mary Giles | Karen Searle |
| Carolyn Halliday | Sandra Self |
| Him Harding | Barbara Lee Smith |
| Mimi Holmes | Vernal Borgren Swift |
| Gail Katz-James | Sandy Swirnoff |
| Carolyn Kallenborn | Marria Thompson |
| Kristi Kuder | Clare Verstegen |
| Candy Kuehn | Lee Ann Mordy Wilson |
| Jane Kenyon | Deborah Wolk |

Surface Design Association members meet and greet, first day of 2011 International Surface Design Conference.



SDA Members' Show
Textile Center Members' Show
MCAD Student and Alumni Show
SDA Students' Show
Paritosh Collection
U of M Student and Facility Show
MN Historical Society Underwear Collection
Pomegranate Guild Collection

Presenters

Jack Becker, Minnesota
Lanny Bergner, Washington
Anna Carlson, Minnesota
Natalie Chanin, Alabama
Jiyoung Chung, Korea
Morgan Clifford, Minnesota
Jodi Colella, Massachusetts
Jane Dunnewold, Texas
Catherine Ellis, North Carolina
Dawn Zero Erickson, Minnesota
India Flint, Australia
Mary Edna Fraser, South Carolina
Stephen Fraser, North Carolina
Chad Alice Hagen, North Carolina
Pat Hickman, New York
Leesa Hubbell, New York
Wendy Huhn, Oregon
Giovanna Imperia, Texas
Marliss Jensen, Minnesota
Vicki Jensen, Massachusetts
Chungie Lee, Korea
Faythe Lavine, Wisconsin
Laura Nicholson, Illinois
Elin Noble, Massachusetts
Sharron Parker, North Carolina
Becka Rahn, Minnesota
Wen Redmond, New Hampshire
Jennifer Reis, Kentucky
Barbara Lee Smith, Washington
Jo Stealey, Missouri
Marie Wisniowski, Australia
Bahakti Ziek, Vermont

The Jerome Fiber Artists Project Grant program continued to advance the careers of emerging fiber artists, providing awards of \$4,500 to four artists to pursue fiber art projects.

Feed the Fibers field trips provided an immersive service to schools and youth groups that struggle to afford cultural field trips. Textile Center broadened its public reach through a partnership with Hennepin County Library and conducted capacity-filled fiber art workshops in branch libraries. In addition, thousands of people were introduced to fiber art through demonstrations and presentations conducted at public festivals, fairs and conferences across the region.

2011/2012 Jerome Fiber Artist Project Grant Recipients

| | |
|-------------|----------------|
| Gay Kemmis | Mary Mortenson |
| Lisa Loudon | Kimber Olson |

Instructors

| | |
|----------------------|-------------------------|
| Susan Antell | Candy Kuehn |
| Christy Binoniemi | Sara Langworthy |
| Sandra Brick | Jill Lynn |
| Debra Caserotti | Marlene Meyer |
| Lynn Cooper | Ella Ramsey |
| Jen Cuff | Andy Rahn |
| Linda Davis | Kim Oedekoven |
| Eryn Dewey-Carter | Erica Spitzer Rasmussen |
| Kit Eastman | Susan Stein |
| Pat Grady | Carol Strand |
| Janet Groenert | Karen Wallach |
| Elizabeth Harrington | PJ Wollum |
| Lauren Koehne | |

Program Partners

American Craft Council
Banyan School
Children's Museum of Southern Minnesota
College of Visual Arts
Corpus Christi Home Educators
Dakota County Libraries
Earle Brown School YMCA
Afterschool Program
Girl Scout Troops
Green Central Park School
Hennepin County Libraries
Highpoint Center for Printmaking
IFP Independent Film Projects
International Spanish Language
Immersion School

Jacquard
 Kaleidoscope Charter School
 Lincoln Elementary School for the Arts
 Lincoln High School
 L'Etoile du Nord French Immersion School
 Maple Grove Arts Council
 Minneapolis Kids
 Minneapolis Museum Meet Up Group
 Minnesota Center for Book Arts
 Minnesota West Community & Technical College
 Northern Clay Center
 Our Lady of Grace School
 Pratt School
 Saint Peters Catholic School
 SPPS Eagles Program
 Sheridan YMCA Beacons Program
 Sibley East High School
 Southside Family Charter School
 Sobriety High School – Arona and Alliance Academies
 Spoonflower.com
 Surface Design Association
 Weavers Guild of Minnesota
 Woodland Middle School
 YouthCare

Outreach Presentation Partners

Art Educators of MN State Conference
 American Craft Council Show
 Craftstravaganza
 Knit & Crochet Show
 Minnesota State Fair

Just the Numbers — International Fiber Art Conference

41 workshops, lectures and demonstrations
 35 fiber art exhibitions
 42 fashion show artists
 51 artists at Unraveled DIY Festival
 458 conference registrants
 12 countries represented
 212 volunteers

Just the Numbers — Education

91 adult classes/workshops
 1 international conference
 24 youth summer camps
 15 Feed the Fibers field trips
 1,200 adult class/conference participants
 1,700 youth program/field trip participants
 + thousands at public events

TEXTILE CENTER PAT O'CONNOR LIBRARY

With the largest circulating fiber art collection in the country, the library remains a hot spot for artists and students to conduct research and seek inspiration. This collection literally comes to life with the Author Lunch Series, featuring presentations by authors of newly published fiber art books and artists featured in new publications.

Author Lunch Series Presenters

Sophie Collier
 Monica Ferris
 Renay Leone
 Mary Logue
 Karen Lohn
 Marie Treanor
 Kristal Wick

Just the Numbers — Library

23,534 volumes
 4,962 patrons
 3,517 visitors
 3,162 items checked out
 5,412 donated books, magazines & patterns
 1,067 donated volunteer hours



Opposite: Textile Center Shop featuring jewelry by Robyn Robinson.
 Above: Detail of *Primordial Felt* by Majorie Fedyszyn from *A Common Thread*.
 Below: *The Spirit* by Dorothy Sauber from *I Am A Link*.



RECOGNITION

Textile Center and our fiber art community thrive because of the participation and support of many people. We are deeply grateful to the dedicated volunteers who keep our programs, operations and events running smooth as silk. This year's volunteer hours were valued at \$143,268. Frankly, this amount barely captures the value volunteers bring to Textile Center.

Textile Center is honored to recognize individuals for their lifetime achievement in fiber art with a **Spun Gold Award**. Recipients during 2011/2012 were Diane Fitzgerald and Susan Stein.

We extend a special thank you to Debi and Ray Lipkin, Paul O'Connor and Textile Center's board of directors for providing matching challenge gifts during Textile Center's annual fund campaign. These gifts inspired many others to step up and generously support Textile Center. More than \$87,400 was contributed to this year's annual fund, making this our best campaign ever.

Leadership Circle members, contributing annual gifts of \$500 and more, are stewards assuring Textile Center's stability and future. We thank Cave Paper and Campbell-Logan Bindery for generously hosting a Leadership Circle member tour of their facilities. Members also attended exclusive exhibition previews.

Thank you to all members, donors, volunteers, and friends who shared in supporting Textile Center's mission and work.

2011/2012 Leadership Circle Members

- | | | |
|---|---|---|
| Anonymous (2) | Richard Gilyard & Sharon Emery | Margaret Miller |
| Dr. Alice Adams | Rosemary & David Good | Sandy & Robert Morris |
| Marty Allen | Carolyn Halliday & C. R. Schult | Leone Murphy |
| Wendy Anderson | Gail & Stuart Hanson M.D. | Lila Nelson |
| Brenda Andrewson | Tim & Kathleen Harding | Maggie O'Connor |
| Dan & Julie Aulwes | Patricia & Robert Huberty | Paul O'Connor |
| Marian-Ortolf Bagley | Tina & Ken Hughes | Carol & Douglas Ogren |
| Susan & Joel Barker | Peggy Hunter & Douglas Wallace | Nancy Onkka |
| Susan Bradley | Kathleen Jordan | Paula & Larry Pfaff |
| Jennie Clarke | Myra Block Kaiser | Mimie Pollard & Alden Drew |
| Jane & John Connett | Margaret Anderson Kelliher & David Kelliher | Kraig Rasmussen & Erica Spitzer Rasmussen |
| Robert R. Davidian | Rosemary Kessler & Kevin Filter | Paula & Lauren Schad |
| Kim Dayton & Laurie Hanson | Sue & Doug Kmetz | Kathleen A. Sherman |
| Maggie Dayton | Brian & Lynn Larson | Nan Sorensen |
| Paula & Cy DeCosse | Debi & Ray Lipkin | Norman Steere |
| Marilee DesLauriers & Jack Militello | Nancy & Warren MacKenzie | Ruth & Dennis Stephens |
| Diane Fitzgerald & Alan Shilepsky | Kathryn Anne Mack | Karen Weiberg |
| Katherine Simon Frank & Richard Y. Kain | Joyce Melander-Dayton | Sherri West & John MacDonald |
| Elise Frederick | | Wendy & Rodney West |
| Nancy Fulton | | |

FINANCIAL REPORT

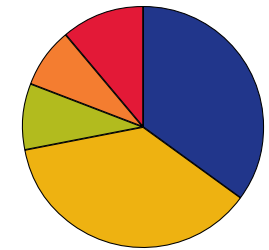
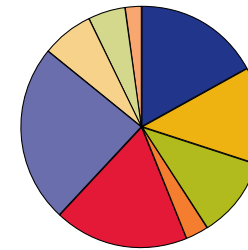
April 1, 2011 – March 31, 2012

Income

| | |
|----------------------------|----------------|
| Foundations & Corporations | 226,485 |
| Government | 175,130 |
| Individuals | 107,741 |
| In-Kind | 24,318 |
| Membership | 50,484 |
| Program & Other | 127,461 |
| Shop & Gallery | 168,661 |
| Rental Income | 64,882 |
| Interest & Dividends | 19,621 |
| Total Income | 964,783 |
| Net Income | 133,077 |

Expenses

| | |
|-----------------------|----------------|
| Exhibitions | 308,960 |
| Education | 290,083 |
| Outreach | 76,402 |
| Management | 67,164 |
| Fundraising | 89,097 |
| Total Expenses | 831,706 |



BALANCE SHEET

March 31, 2012

Assets

| | |
|---------------------------|------------------|
| Mondale Gallery Endowment | 239,462 |
| Operating Cash Reserve | 293,753 |
| Building Reserve | 142,152 |
| Building/Fixed Assets | 1,346,739 |
| Accounts Receivable | 219,900 |
| Other Assets | 10,687 |
| Total Assets | 2,252,693 |

Liabilities & Net Assets

| | |
|---|------------------|
| Accounts Payable | 22,896 |
| Other Liabilities | 18,777 |
| Unrestricted Net Assets | 1,775,102 |
| Temporarily Restricted Assets | 256,593 |
| Permanently Restricted Assets | 179,325 |
| Total Liabilities & Net Assets | 2,252,693 |

MEMBERSHIP

BUSINESS MEMBERS

3 Kittens Needle Arts
 Bobbin Doctor
 Bobbin House Guest Suite
 C & M Designs
 Center for Pattern Design
 Crafty Planet
 Custom Woven Interiors, Ltd.
 Darn Knit Anyway
 Ellison Sheep Farm
 Knits & Pearls
 L.J. Fibers at The Wooly
 Red Rug
 Lila and Claudine's Yarn
 and Gifts
 Madeline Island School of
 Fine Arts
 Multiculture Gallery
 North Country Yarn
 P.A.M. Lesch LLC
 Taxes+Accounting
 Pied Piper Crafts
 Raven's Beak Design
 Sewtropolis
 Spinning Spools Quilt Shop
 St. Peter Woolen Mill, Inc.
 Steven Be
 Treadle Yard Goods
 Twin Cities Quilting
 Wildwood Press, LLC
 Yarn Garage
 Yarn Happy Bead Happy

MEMBER GUILDS

American Needlepoint Guild,
 MN Chapter
 American Sewing Guild,
 Minneapolis-St Paul
 Chapter
 Artist's Circle
 Crochet Guild of America
 Duluth Fiber Handcrafters
 Guild
 Duluth Needle Art Guild
 Fiber Artists Study Group
 Friday Knitters
 The Goldstein Museum of
 Design
 Ladyslipper Needlearts
 Society
 Ladyslipper Thimblers of
 Minnesota
 Lavender Wool
 Machine Knitting Guild of

Minnesota
 Midwest Machine Knitters'
 Collaborative
 Minnesota Basket Weavers
 Guild
 Minnesota Contemporary
 Quilters
 Minnesota Knitter's Guild
 Minnesota Lace Society
 Minnesota Society of
 Costumers
 Minnesota State Button
 Society
 Natural Dye Study Group
 Needlework Guild of
 Minnesota
 Northern Lights
 Handspinners Guild
 Pioneer Spinners & Fiber
 Artists
 Polymer Clay Guild of
 Minnesota
 Rug Hookers-Midwest
 St. Paul Needleworkers
 Shepherd's Harvest Sheep
 & Wool
 Sievers School of Fiber Arts
 South Minneapolis Quilters
 TACTile Textile Arts Center
 Upper Midwest Bead Society
 Vesterheim Norwegian-
 American Museum
 Wearable Art Midwest
 Weavers Guild of Minnesota

INDIVIDUAL MEMBERS

Spun Gold \$1000
 Elise Frederick

Silk Thread \$500
 Nancy L. Fulton & Deborah
 A. Fulton
 Myra Block Kaiser
 Debi & Ray Lipkin
 Joyce Melander-Dayton

Fine Linen \$125
 Amy Andersen
 Wendy Anderson
 Barbara & Harold Bend
 Sharon Bigot
 Susan Bradley
 Brigid & Kevin Brindley

Barbara Daiker
 Pamela Davis
 Maggie Dayton
 Marilee DesLauriers & Jack
 Militello
 Katherine Simon Frank &
 Richard Y. Kain
 Peggy Hunter & Doug
 Wallace
 Carol Oversvee Johnson
 Patty Kuebker Johnson
 Sally Jorgensen
 Megan Kamrath
 Rosemary Kessler & Kevin
 Filter
 Linda Krach
 Roxanne Kukuk
 Joan E. LaVine
 Renay & Gerry Leone
 Laura F. Miller
 Walter Nottingham
 Carol & Douglas Ogren
 Christine Ottosen
 Ella Ramsey
 Teresa & Conrad Razidlo
 Mary Lonning Skoy
 Ann Somers
 Medora Woods

Worsted Wool \$80
 Elizabeth & Daniel Abbene
 Gordon Apple & Susan
 Thornton
 Dan & Julie Aulwes
 Paula R. Biever
 Bounxou Chanthraphone
 & Laddavanh
 Insixiangmay
 Vickie Cyr
 Patricia Ewer
 Scotty & Peter Gillette
 Richard Gilyard & Sharon
 Emery
 Carolyn & Brian Golberg
 Cherie Hamilton
 Janet Jacobson & Diane
 Schill
 Jeanne, Kate & Anna
 Kaminski
 Nancy & Rick Killmer
 Paula & Nels Knutzen
 Cheryl Laurent
 Diana & Charles Lawrence
 Daniel E. & Debra L.
 Magnuson

Mrs. Marilyn M. Moon
 Chris Motley
 Nancy Onkka
 Paula & Larry Pfaff
 Ann Rinkenberger
 Susan & Jerome Ritter
 Susan & Paul Schultz
 Thomas & Laurel Scott
 Joy Simonsen
 Bridget Smith
 Heidi & Judy Steltzner
 Bill & Linda Sumner
 Jorunn & Carreen Svanoe
 Roberta Swanson
 Sherri West & John
 MacDonald
 Petronella J. Ytsma

Pearl Cotton \$50

Gabrielle
 Kathleen A. Aaker
 LeAnn Aakre
 Carolyn T. Abbott
 Dr. Alice Adams
 Carla Adams
 Laura Adams
 Jeannina Adams
 Cordell Affeldt
 Patricia Alexander
 Amelia Allen
 Marty Allen
 Karie L. Amstutz
 Audrey I. Anderson
 Ingrid Anderson
 Judith Anderson
 Deborah Sue Anderson
 Jeanne Andeweg
 Peggy Andrajack
 Fran Andress
 Brenda Andrewson
 Jan Apple
 Linda Arlien
 Carol Austermann
 Alison Awes
 Diane Ayer
 Barbara Bach
 Jeanne Back
 Andrea Back
 Marian-Ortolf Bagley
 Kim R. L. Baird
 Martha Baker
 Ian Baldry
 Peggy Baldwin
 Terry Banovetz-Gerst
 Nancy Bardach

Susan Barker
 Gerri Barosso
 Joanne Barron
 Anne Bartel
 Karen Bartig
 Iris Bauermeister
 Elizabeth A. Baum
 Paula J. Beck
 Suzann Beck
 Jean Becker
 Betsy Beninger
 Nancy Benson
 Dominique Bereiter
 Susan Bergan
 Linda Berglin
 Denise Beusen
 Beki Biesterfelt
 Christy Binoniemi
 Therese Blaine
 Deborah Bletsch
 Connie Blieszner
 Barb Bode
 Darla Bohn
 Margaret Boler
 Jean Borkenhagen
 Nancy Bossert

Julie Bowen
 Anne Boyd
 Ann Braaten
 Elizabeth Brackett
 Lee Bradford
 Adele Branch
 Julie Branch
 Judy Bratt
 Sandra Brick
 Sharon Brick
 Mia Briggs
 Naomi Brill
 Barbara Brockett
 Charlene Brown
 Eve Brown
 Linda Nelson Bryan
 Joan Buchanan
 Katherine Buenger
 Gayle E. Burdick
 Janet Burger
 Ann Burian
 Charlene Burningham
 Ann Butwell
 Bonnie W. Buzza
 Sue Bye
 Sharon Cahn

Kathleen A. Caldwell
 Connie Campbell
 Jean Campbell
 Kathleen E. Campbell
 Lisa Carey
 Elizabeth Carls
 Ann Carlson
 Anna Carlson
 Jackie Carlson
 Susan Carlson
 Linda J. Carlson
 Darlene Carroll
 Pat Carter
 Joan Carver
 Leslee Casey
 Deb Ceci
 Phyllis Chism
 Bernadette Christiansen
 Faith Clover
 Doris Coghill
 Jan Colliton
 Diane Combites
 Nancy Condon
 Dawn Carlson Conn
 Kathleen Connelly
 Jane Connett

Ruth A. Connor
 Barbara Copeland
 Philip Cordes
 Kathleen H. Corley
 Virginia Corrick
 Julie Crabtree
 Judy Crocker
 Ellie Crosby
 Creta Crowley
 Jennifer L. Cruise
 Joy Curtin
 Patricia Eide Curtner
 Marian Dahlberg
 Linda Davis
 Virginia Davis
 Susan V. Day
 Suchsmita De
 Alena DeCandia
 Ruth DeCosse
 Amanda Degener
 Clare Degerness
 Dorothy Delegard
 Catherine DeMars
 Mary Ellen Dercks
 Janet Dickinson
 Susan Dickman

Summer camp students.



| | | | | | | | |
|---------------------|----------------------------|------------------------|------------------------|-----------------------|-----------------------|------------------------|------------------------|
| Lisa Dietz | Mary Beth Schroeder Fracek | Carri Hammett | Mary Holland | Micah Kinder | Kathryn McAlister | Elizabeth Nash | Bobbi Pinsky |
| Ann Diun | Janine Freij | Jean Hammink | Terri Hollingsworth | Judy King | Marci McDade | Rita Nau | Sharon Pleimling |
| Janet Dixon | Kay Ann Fritz | Mary Hamre | Pamela A. Hoppe | Wendy Klager | Layl McDill | Melissa Nellis | Mary Guilford Plumb |
| Linda Domeier | Lynn Fumuso | Patricia L. Hanauer | Diana S. Horigan | Yvonne Klocek | Brenda McGuire | Ellen Nelson | Katherine J. Pohlman |
| Ruth Donhowe | Marlene Gaige | Linda Dexter Hancher | Nancy Hovanes | Joan Kloiber | Victoria McKinney | Janet Nelson | Kristine Post |
| Sharla Donohue | Debra Gangelhoff | Linda S. Hansen | Tina Hughes | Sue Kmetz | Beth E. McLaughlin | Lila Nelson | Ann Poulson |
| Laurinda Dubishar | Joan L. Gardner | Gail Hanson | Katherine Huntington | Diane Knights | Rosemary McMonigal | Naomi W. Nelson | Christine Pradel-Lien |
| Sylvia P. Dudycha | Terry A. Garey | Marie Hanson | Francie Iverson | Michelle Knotz | Linda McShannock | Anne Nettles | Eva Pranis |
| Judy Dunlap | Beverly Geber | Meg Hanson | Anita Jain | Karin Knudsen | Elaine Anne MacGregor | Carol Neumann | Judith Preckshot |
| Elizabeth Dvorak | Karen E. Gensmer | Wendy Harden | Deborah Jarchow | Elisabeth Knutson | Kathryn Anne Mack | Ruth Newman | Nancy Preckshot |
| Toni Easterson | Joy Gerard | Mary Hardt | Jeannette Jarmon | Nancy Koehne | Jane Ann MacKenzie | Elizabeth M. Preston | Elizabeth M. Preston |
| Kathryn Eastman | Joan Gilbertson | Roxanne Hardy | Linda J. Kollofski | Linda J. Kollofski | Mhdlon Madcap | Mary Nichols | Cheryl Rackner |
| Trudy Ebert | Karen A. Gill-Gerbig | Valorie Harlow | Susan C. Kolze | Susan C. Kolze | Linda Madden | Stacy L. Nichols | Aimee Radman |
| Marcella Edmund | Jill Gimbel | Elizabeth Harrington | Linda Kosfeld | Linda Kosfeld | Chris Madsen | Joan Nicol-Hoium | Johanna Radzwill |
| Nancy Eha | Jan Gjerde | Janet Hartje | Katherine L. Kottke | Katherine L. Kottke | Liana Magee | Jane Niemi | Mely Rahn |
| Claire Ehernberger | Kristine Gjerde | Ellen Hart-Shegos | Linda Kovarik | Linda Kovarik | Finette Magnuson | Deborah Nissen | Janice Rapacz |
| Karen Ellingson | Marcia Glancy | Doreen Hartzell | Jeanie Kozar | Jeanie Kozar | Dianne Mahoney | Stephanie Nordlin | Susan Rappaport |
| Mickey Ellis | Joan Gasper | Ann Harvell | Janet Krofta | Janet Krofta | Carol Malueg | Dorothy M. Nordstrand | Linda Ratka |
| Tildy Ellis | Lynn Glesne | Ann M. Haushild | Pat Kroth | Pat Kroth | Nancy Mambi | Shelly Nordtorp-Madson | Rebecca Ratzlaff |
| Joan Ellison | Shawn Glidden | Jean Hawton | Marit Lee Kucera | Marit Lee Kucera | Debra Manderfeld | Lucille Norman | Wen Redmond |
| Lindsay Embree | Barbara Goldencrown | Karen Heddens | Kristi Swee Kuder | Kristi Swee Kuder | Anne R. Manly | Penny Norman | Lynne Renz |
| Karen Engelbretson | Natalie Goldston | Michele Heidel | Candy Kuehn | Candy Kuehn | Pamela Manthei | Mary Nuebel | Sandy Resnick |
| Sharon Englund | Susan Good | Lonnie Helgeson | Mary B. Johnson | Mary B. Johnson | Lynne Markus | Renee Obrecht-Como | Ingrid Restemayer |
| Barbara Erickson | Margie Goodnuff | Tam Helmin | Barb Johnson | Barb Johnson | Penny Marsala | Chiaki O'Brien | Ann Ribbens |
| Elsa Jo Estrem | Elna Goodspeed | Heidi Henderson | Gerri Johnson-McMillin | Robbie LaFleur | Lois Martin | Karen O'Brien | Mimi Richgruber |
| Grace Evans | Anita Gorder | Sarah Hendren | Jane Johnston | Elizabeth Lanzatella | Barbara Martinson | Marcie O'Connor | Sara D. Richter |
| Kala Exworthy | Jean C. Gorman | Linda Witte Henke | Cheryl Jones | Karen Lynn Larsen | Ann Masemore | Elizabeth Ofstead | Joan Riedl |
| Bridget Faricy | Loris Goth | Mary Ellen Hennen | Nancy Platt Jones | Peggy Lathrop | Doree Maser | Charlotte M. Olsen | Shirley Riel |
| Joan Fearing | Pat Grady | Audrey Henningson | Kimberly Jurrjens | Kathleen Laurila | Wynne Mattila | Carolyn J. Olson | Angie Robinson |
| Marjorie Fedyszyn | Ania Grandbois | Susan Hensel | Kimberly Kaelin | Wendy Lazear | Robyn Meadows | Connie Oosterhuis | Betsy Robinson |
| Lynnae Finseth | Nedra Granquist | Kate Hepp | Suzanne Kane | Debby Leonard | Janet Meany | Judy Ostrowski | Cindy Starkey Robinson |
| Robbin Firth | Mary M. Gregg | Marilyn Herrmann | Susan Karrasch | Beth Leonidas | Carole Meidinger | Dina O'Sullivan | Michael F. Rohde |
| Mimi Fisher | Connie Gunderson-Warner | Liz Hickerson | Gail Katz-James | Jenny Levernier | Debra Merte | Barbara Otto | Catherine Rootness |
| Jane Fisher-Merritt | Beth Gunn | Jo Hill | Darla L. Keller | Sally Lieberman | Kathryn Mertz | Karla Overland | Lyn Rosenberg |
| Diane Fitzgerald | Catherine J. Guy | Meredith Hille | Gay Kemmis | Kelly Lightner Beaman | Robert Meyer | BarbAnn Pappas | Jean Ross |
| Barbara Fitzmaurice | Karen Hall | Joan Hinds | Annie B. Kennedy | Ingrid Lincoln | Kathy A. Miller | Bongsoo Park | Marilyn Rothschild |
| Renee Forte | Susan Hallgren | Judy Hodder | Margaret Mousley Kiely | Jackie Lind | Margaret Miller | Sharon Parker | Karla Rydrych |
| Mary B. Foster | Carolyn Halliday | Nancy Hoerner | Beth Kimball | Marjorie Lindemann | Jeni Mitchell | Joan Parsons | Connie Ryks |
| Mary J. Foster | Carole Hallman | Sharon Tessman Hoiland | Katherine Kincaid | Donna Linden | Pauline Mitchell | Teresa Paschke | Susan Sandager |
| | | | | Anne Lindgren | Anne Mockovak | Donna Pauley | Katie Sandstedt |
| | | | | Sandra Lindquist | Ar dys Moen | Carol B. Paulson | Heather Saucier |
| | | | | Pamela Lipe | Sylvia Mohn | Jean Payne | Francesca Sautman |
| | | | | Ruth A. Litterick | Lori Monson | Judith Payne | Janet E. Sawyer |
| | | | | Mary Logue | Ruth Bright Mordy | Robert Payton | Mary Ellen Sax |
| | | | | Korrin Lohmann | Susan K. More | Valinda Pearson | Judy Saye- Willis |
| | | | | Karen Lohn | Mary Mortenson | Carol Pedersen | Andrea Scamehorn |
| | | | | Amy Loken | Claire C. Most | Rodney Pedley | Maggie Scanlon |
| | | | | Bernadette Longo | Catherine M. Mueller | Laurie Pekarik | Janet Schaffer |
| | | | | Patricia Lovegreen | Ann Munt | Patricia Peshorn | Annette Schardin |
| | | | | Melinda Lowy | Mary Murphy | Denise Perry | Laura Schneck |
| | | | | Andrea Lubov | Sarah Murphy | Donna C. Peterson | Maggy Schneider |
| | | | | Ellen Luepker | Tish Murphy | Kathie Peterson | Catherine Schoenherr |
| | | | | Karen E. Luessenheide | Laura Murray | Maren Peterson | Mary F. Schouville |
| | | | | Diane Lundquist | Lisa Murray | Victoria Peterson | Clara M. Schreiber |
| | | | | Hazel Lutz | Diane Muse | Doris Staub Petrie | Jennifer Schultz |
| | | | | Rebecca Lyon | Gretchen Musicant | Beverly Petrie | Elizabeth Schwalm |
| | | | | Donna Lystrom | Sharon Nancarrow | Sydney M. Phillips | Jill Schwebs |

Detail of *Safety Measures* by Clare Versteegen from *Atmospheric Measures*.



Sheryl Schwyhart
 Kathryn Scott
 Lisa Scribner
 Karen Searle
 Gina Sekelsky
 Wendi Seminari
 Mary Sesbeau
 Marjorie Sethna
 Suzanne Sewell
 Wanda Shelton
 Kathleen Sherman
 Robbyn Shiell
 Nora Shilts
 Madeline Shinbach
 Shelley Shreffler
 Lynn Shuck
 Mariana R. Shulstad
 Carolyn Silflow
 Ellen Silva
 Julie Sirek
 Ann Sisel
 Su Skog
 Christy Ann Skuban
 Jean Smelker- Hugi
 Kathleen Smith
 Mary Ruth Smith
 Katherine Smith-Bridges
 Kristin Smith-Procter
 Anita Smits
 Linda Snouffer
 Rick Snyderman
 Nan Sorensen
 Amy Sparks
 Rebecca Speakes
 Krista Spieler
 Erica Spitzer Rasmussen
 Tricia Spitzmueller
 Elsa M. Sreenivasam
 Carol St. John
 Carol Starkey
 Jane A. Starr
 Mary Steen
 Norman Steere
 Ione Stein
 Susan Stein
 Ruth Stephens
 Pat Sterle
 Renee Stevens
 Sharon Stillman
 Liba Stillman
 Dorothy Stish
 Melody Stocton
 Helen Stoerzinger
 Judy Stowe
 Nancy Stroessner
 Tressa Sularz
 Evy K. Sussman

Diane M. Swallen
 Joanne Swanson
 Bonnie J. Swierzbin
 Merle H. Sykora
 Colleen Tabaika
 Susan Taylor
 Sandra Menefee Taylor
 Mary H. Temple
 Ruth Temple
 Diane Tessman
 Merry Jo Thoele
 Jerrilyn Thompson
 Linda Thompson
 Rebecca Ganzel Thompson
 Edi Thorstensson
 Mariann Tiblin
 Barbara Tiede
 Amy Tillotson
 Katherine Tilton
 Barbara Tober
 Dawn Tombisammy
 AnnaLisa Tooker
 Evelyn Torkelson
 Patricia S. Towne
 Polly Tracey
 Cindy Trainor
 Colleen Trebil
 Margaret L. Ubel
 Elea Uhl
 Judy K. Ulrich
 Peg Unger
 Rebecca Utecht
 Brad Van Gorder
 Mary Ann Van Soest
 Mary Vanderwerp
 Gretchen VanHauer
 Andrea Vargo
 Ellen P. Varney
 Margaret P. Vartanian
 Alicia Vegell
 Jean Velleu
 Paula Vesely
 Kate Vinson
 Cynthia A. Voelke
 Vienna Volante
 Joan Vorderbruggen
 Julia Wallace
 Barbara Wanamaker
 Nancy Ward
 Zantha LaFon Warth
 Jini Washburn
 Micheline Watrous
 Mary C. Weber
 Ann Webster
 Bonnie Wedge
 Georgia A. Wegner
 Allyson Weir

Karin Weiss
 Charlotte Wenger
 Colleen Werdien
 Nancy Werner-Azarski
 Robin Westacott
 Barbara Westgard
 Beverly Westra
 Karen Westwood
 Jennifer Whaley
 Jori L. Whitehead
 Margaret Wiatrowski
 Nancy Wick
 Beth Wicklund
 Barbara Wieman
 Robin Wille
 Martha R. Willett
 Melanie Willett
 Ann Boellstorff Williams
 Gloria M. Williams
 Vicki Williams
 Winnie Williams
 Mary Wilson
 Sharon Wilson
 Victoria P. Wilson
 Cheryl Winter
 Cheryl Witt
 Barbara Wood
 Jo Wood
 Sandy Worthing
 Peggy Wright
 Ali Young
 Faye Youngren
 Maria Ann Youngs
 Tracy Zanitsch
 Patricia Hable Zastrow
 Kimberly Zaylskie
 Wendie Zekowski
 Tina Zelinka
 Pamela Ziegenhagen-Shefland
 Hilary Ziols

Ramie \$40
 Lisa Arcand
 Mariann Bentz
 Betty Jean Bisson
 Hanna Brandt
 Lucy Brusic
 Lynn E. Cooper
 Karen Cyson
 Kay Dole
 Joan U. Dougherty
 Kate Eelkema
 Jacqueline Felt
 Nancy Gipple
 Jean Hainlen
 Judie Hanson

Heather A. Harper
 Alice S. Holm
 Deborah Johnson
 Sofia Johnson
 Lucinda Keers
 Ann Kreider
 Mary B. Larson-Quam
 Colleen LaVenture
 Jane Leverenz
 Barbara Neal
 Kristy Orison
 Margaret Pfeffer
 Nancy Wick
 Priscilla Sage
 Erica Schlueter
 Adrienne Sloane
 Beverly Sell Tesch
 Marsha Theis
 Kathy Tuominen
 Monica Villars
 Carolyn Vujovich
 Marthetta Watson
 Beth Widell
 Julie Ziegler

Hemp \$25
 Summer Camp Student Memberships (12)
 David Bearon
 Elizabeth Belz
 Michele Burns
 Debra Caserotti
 Kathleen Davoli
 Robin Getsug
 Lori Gingerich-Boberg
 Sarah Hardy
 Mary Henderson
 Margaret J. Hornbacker
 Lynn Isakson
 Audrey Johnson
 Nahid Khan
 Ramona Liem
 Louise Matson
 Bridget McCanna
 Lisa Mittler
 Kathryn Pesch
 Kristin Pesola
 Stina Pugh
 Allison Roberts
 Nina Robinson
 Ardie Swanson
 Janette Sweasy
 Ginger Synstebly
 Catherine Thompson
 Lucia Upham
 Zijun Wang
 Kristyn Wilton
 Ramona Wuertz



Lynn Cooper leads a Feed the Fibers field trip.

CONTRIBUTORS

ANNUAL FUND DONORS

\$2,000 and above

Anonymous (2)
 Tina & Ken Hughes
 Debi & Ray Lipkin
 Sandy & Robert Morris
 Paul O'Connor

\$500 - \$1,999

Anonymous (2)
 Dr. Alice Adams
 Marty Allen
 Wendy Anderson
 Brenda Andrewson
 Marian-Ortolf Bagley
 Susan & Joel Barker
 Susan Bradley
 Jennie Clarke
 Jane & John Connett
 Robert R. Davidian
 Maggie Dayton
 Kim Dayton & Laurie Hanson
 Paula & Cy DeCosse
 Marilee DesLauriers & Jack Militello
 Diane Fitzgerald & Alan Shilepsky
 Nancy Fulton
 Richard Gilyard & Sharon Emery

Gail & Stuart Hanson
 Tim & Kathleen Harding
 Robert & Patricia Huberty
 Peggy Hunter & Doug Wallace
 Kathleen Jordan
 Margaret Anderson
 Kelliher & David Kelliher
 Rosemary Kessler & Kevin Filter
 Brian & Lynn Larson
 Kathryn Anne Mack
 Joyce Melander-Dayton
 Margaret Miller
 Leone Murphy
 Lila Nelson
 Carol & Douglas Ogren
 Nancy Onkka
 Paula & Larry Pfaff
 Mimie Pollard & Alden Drew
 Paula & Lauren Schad
 Kathleen A. Sherman
 Ruth & Dennis Stephens
 Karen Weiberg
 Sherri West & John MacDonald
 Wendy & Rodney West

\$100 - \$499

Anonymous (3)
 Carla Adams
 Dan & Julie Aulwes
 Kim Baird

Arba-Della Beck
 Paula J. Beck
 Barbara & Harold Bend
 Lee M. Bradford & Joel Hetler
 Katherine H. Buenger
 Sue & Steve Bye
 Jean R. Christensen
 Dawn Carlson Conn
 Julia A. Costello
 Jennifer L. Cruise
 Joanne B. Eicher
 Patricia A. Fisk
 Anne Flora
 Katherine Simon Frank & Richard Y. Kain
 Elise Frederick
 Patricia N. Freiert
 Lynn Fumuso
 Scotty & Peter Gillette
 Lynn A. Glesne
 Carolyn & Brian Golberg
 Sara Graffunder
 Carolyn G. Halliday & C. R. Schult
 Barbara Haugen
 Margot Johnson
 Cheryl D. Jones & Gordie Uttermark
 Sally Jorgensen
 Julie Jurrjens
 Art & Martha Kaemmer
 Sandy Kasma &

Terryl Qualey
 Blaine & Lyndel King
 Judy K. King
 Joan Kloiber
 Susan & Doug Kmetz
 Linda Kollofski
 Patty Kuebker Johnson
 Lydia Kulesov
 Sara Langworthy
 Elizabeth Lanzatella
 Knut E. LaVine
 Karen B. Lehman
 Renay & Gerry Leone
 Loretta Litke
 Carla McGrath & Cole Rogers
 Bonnie McLellan
 Liana Magee
 Anne R. Manly
 Susan E. Mansfield
 Kelly Marshall
 Sara Meany
 Cyndi Kaye & David M. Meier
 Dennis Miller & Christine Olson
 Minnesota Contemporary Quilters
 Joan & Walter Mondale
 William H. Mondale
 Mary Mortenson
 Laura Murray
 Deborah Nissen

Diane O. Noble
 Dorothy Nordstrand
 Larry Olds
 Vivian Orey
 Mary & David Parker
 Joan B. Parsons
 Donna C. Peterson
 Ann Poulson
 Mely Rahn
 Ella Ramsey
 Kraig Rasmussen &
 Erica Spitzer Rasmussen
 Lynne R. Renz
 Ann Ribbens
 Pauline Sargent
 Susan Hunter Schultz
 Sheryl Schwyhart
 Audree L. Sells
 Ann M Somers
 Norman Steere
 Tressa Sularz
 Diane M. Swallen
 Craig & Janet Swan
 Margret Swanson
 Merle H. Sykora
 Carol Sylvester
 Mary H. Temple
 Brad Van Gorder
 Beth A. Wegener

Barbara Wieman
 Jenny Wilder
 Medora Woods
 Sandy Brennan Worthing
\$1 - \$99
 Anonymous (11)
 Artist's Circle
 Amy Andersen
 Jeanne Andeweg
 Jan Apple
 Deborah Barnett
 Elizabeth Baum
 Cornelia Beck
 Nancy Belbas
 Joan Bellin
 Dominique Bereiter
 Sue Berglund
 Mrs. Elizabeth Ann Berube
 Karen L. Besser
 Charlotte S. Bird
 Betsy Blume
 Jean D. Borkenhagen
 Debra Boyles
 Ann Braaten
 Adele Branch
 Hanna Coen Brandt
 Rhoda Braunschweig
 Sharon K. Brick

Brenda Brousseau
 Linda Nelson Bryan
 Sylvia Buonanni
 Ann Burian
 Charlene Burningham
 David & Bonnie Buzza
 Elizabeth Bye
 Susan E. Carlson
 Juliet K. Carlson
 Morgan Clifford
 Jan P. Colliton
 Julie Cook
 Lynn E. Cooper
 Vickie Cyr
 Marian L. Dahlberg
 Edith Ann Dalleska
 Barbara Davis
 Beth Davis
 Linda Davis
 Arlene M. Decandia
 Mary Ellen Dercks
 Rita Dillon
 Catharine Ellis
 Tildy Ellis
 Sharon A. Englund
 Elaine Evers
 Janet M. Falk
 Carrie Federer
 Marjorie Fedyszyn

Mary Ann Finegan
 Ann Finseth
 Margaret Foley
 Janine A. Freij
 Suzanne M. Garfield
 Roxanne Garoutte
 Lucy Garrity
 Pat Gavan-Gordon
 Maryanne Gay
 Barb Ginner
 Nancy Gipple
 LaVell Gold
 Loris J. Goth
 Nedra A. Granquist
 Jill Green
 Ann B. Griese
 Janet Groenert
 Robert Hainlen
 Cherie Hamilton
 Marie E. Hanson
 Roxanne Hardy
 Ann Haushild
 Janet Hayman
 Stefan & Lonnie Helgeson
 Dulcey Heller
 Susan Hensel
 Phyllis Hepp
 Marilyn Herrmann
 Julie Himmelstrup

Mary & Ed Holland
 Debra Hunt
 Audrey Johnson
 Vicki Jurek
 Christine E. Kane
 Mary Diane Katsiaficas
 Yumi Kayama
 Margaret Mousley Kielty
 Fred & Jo Nystuen Kies
 Wendy Klager
 Marit Lee Kucera
 Donna Mae C. Kuhl
 Tricia Simo Kush
 Roberta W. LaFleur
 Myrna B. Lamberton
 Cheryl Laurent &
 John Sokalski
 Marjorie S. Lindemann
 Lisa J. Louie
 Andrea Lubov
 Hazel A. Lutz
 Cheryl MacDonald
 Ruth McCarthy
 Beth McLaughlin
 Tracy McMan
 Chris Madsen
 Louise Nemmers Mageli
 Nancy Mambi
 Penny Marsala

Judith Marshall
 Jane Mason
 Sonia Meade
 Carolfaye Meadows
 Robert F. Meyer
 Laura Miller
 Annette Modesitt
 Sylvia Mohn
 Marilyn Monson
 Naomi W. Nelson
 Linda Nelson
 Randy & Joy Nelson
 Pam Nelson
 Janet Newberg
 Jane Niemi
 Karen L. O'Brien
 Kimber & Greg Olson
 Mary Jean Olson
 Turid Ormseth
 Sonja Palmer
 Steven C. Pauling
 Jean A. Payne
 Valinda Pearson
 Margaret Pedersen
 Michelle & Trevor Perrin
 Linda Perry
 Debra Peterson
 Mary & Mark Peterson
 Roberta Pinsky

Christine Pradel-Lien
 Judith E. Preckshot
 Teresa & Conrad Razidlo
 Della Reams
 Sharon Robichon
 Mary Jo Roche
 Leah Rogers
 Sally & Robert Roscoe
 Michelle Sahlin
 Sharon & Rod Sandberg
 Kathy Saterbak
 Robert Sauer
 Janet Schaffer
 Mary F. Schouviller
 Susan Segal
 Suzanne Sewell
 Shelley Shreffler
 Ann Sisel
 Mary Skoy
 Adrienne Sloane
 Diana L. Smith
 Anita Smits
 Constance S. Sommers
 Krista L. Spieler
 Patricia Spitzmueller
 Caroline Stafford
 Ione & Eugene Stein
 Renee J. Stevens
 George Swan

Sandy Swirnoff
 Sharon Tessman
 Barbara N. Thorkelson
 Lisa Thornquist
 Dawn Tomblinson
 Dawn Tomblinson
 Aaron & Melisa Wahlstrom
 Mark Wahlstrom
 Mary C. Waibel
 Joan C. Wells
 Beth Wicklund
 Barbara & Robert Wieman
 Sharon Wildfang
 Robin R. Wingo
 Holly A. Wolhart
 Pamela J. Wollum
 Megan Wright

Detail of *Klimt* by Kimberly Kaelin from *A Common Thread*.

Detail of *Autumnsapes* by Marlene Meyer from *Holiday Show & Sale*.



IN HONOR OF

Kim R. Baird in honor of Hjerdis Watson
Arba-Della Beck in honor of Melisa Wahlstrom
Ann Braaten in honor of Linda McShannock
Linda Nelson Bryan in honor of Anita E Nelson
Dawn Carlson Conn in honor of Sheryl Schwyhart
Marian L. Dahlberg in honor of husband
Barbara Davis in honor of Joan Mondale and her family
Lynn Fumuso in honor of Lacemaking
Mary & Ed Holland in honor of Nancy Mambi
Marit Lee Kucera in honor of Susan Stein
Knut LaVine in honor of Joan LaVine
Michelle & Trevor Perrin in honor of Grandma Perrin
Diana L. Smith in honor of Carol Jean Stites

Caroline Stafford in honor of Rebecca Stafford
Rahn, Beth Stafford
Davis, and Rachel Anne Stafford
Aaron Wahlstrom in honor of Melisa Wahlstrom
Mark Wahlstrom in honor of Melisa Wahlstrom

IN MEMORY OF

Karen L. Besser in memory of Hazel Skare
Patricia N. Freiart in memory of Lucile Neaderhouser
Sally Jorgensen in memory of Mary Lee Barlow
Fred and Jo Nystuen Kies
Dennis Miller and Christine Olson in memory of Helen Miller
Paula & Larry Pfaff in memory of Al Johnson
Ann Ribbens in memory of Julia Ribbens
Anita Smits in memory of Anna Smits

FOUNDATIONS, CORPORATIONS & GOVERNMENT

Elmer L. and Eleanor J. Andersen Foundation
Beim Foundation
Boss Foundation
Patrick and Aimee Butler Family Foundation
Rosemary and David Good Family Foundation
Jerome Foundation
The McKnight Foundation
Minnesota Arts & Cultural Heritage Fund
Minnesota State Arts Board
Target Foundation
Archie D. & Bertha H. Walker Foundation

CORPORATE MATCHING GIFTS

Adobe Systems Inc.
Matching Gift Program
Blue Cross Blue Shield of Minnesota
General Mills Foundation
Gift Matching Program
The Margaret A. Cargill Foundation

SUPPORTING BUSINESSES

3 Kittens Needle Arts
Amazing Threads
Aunt Annie's Quilts & Silks
The Bead Monkey
Fibre Functions Yarns
Ginny's Fine Fabrics
Ingebretsen's Scandinavian Center
L J Fibers at the Wooly Red Rug
Linden Hills Yarns & Textile Designs, LTD.
Mary Lue's Yarn & Ewe
Mehera Shaw Boutique
Playing With Yarn
St. Croix County Dry Goods
St. Peter Woolen Mills
Sewing Lounge
Steven Be
Stormcloud Trading Co. (Beadstorm)
Treadle Yard Goods
Yarn Garage
Yarn Harbor
The Yarnery
Yarnworks



Detail of *From My Garden* by Pauline Mitchell from *A Common Thread*

DESIGNATED GIFTS

JOAN MONDALE GALLERY ENDOWMENT

\$500 and above

Anonymous (1)
Margaret Anderson
Kelliher & David Kelliher
Margaret Miller
Nan Sorensen

\$100 - \$499

Anonymous (5)
Marty Allen
Dan & Julie Aulwes
Steven Berg
Brigid & Kevin Brindley
Barb Davis
Marilee DesLauriers & Jack Militello
Robbin Firth
Katherine Simon Frank & Richard Y. Kain
Arvonne Fraser
Nancy Fulton
Richard Gilyard & Sharon Emery
Carolyn Halliday & C. R. Schult
Cherie & Russell Hamilton
Ellie Hands in memory of Eleanor Mondale Poling
Bonnie Hanson
Roxanne Hardy
Kathryn Harper
Audrey & Chris

Henningson
Tina & Ken Hughes
Peggy Hunter & Doug Wallace
Robin Jacobs & Jay Arneson
Doug & Sue Kmetz
Linda Kollofski
Candy Kuehn & Craig Harris
Diana & Chuck Lawrence
Pam Lesch
Jean McMahon
Elaine & Larry May
William H. Mondale
Kimber & Greg Olson
Richard & Meredith Poppele
Susan Rodsjo
Janet E. Sawyer
Norman Steere
Ruth & Dennis Stephens
Karen Weiberg
Arlene West & Kevin Bevis
Sherri West & John MacDonald

\$1 - \$99

Anonymous (1)
Lynne Ackerberg
Paula J Beck
Sonya Berlovitz
Betsy Beutell
Bonnie & David Buzza
Mary Ellen Calderwood
Christopher Cheney

Cindy Colson
Councilmen Jon Commers & Beth Commers
Dianne & Kerry Conner
D. Stephen Elliott
Welles Emerson
Any Engman
Andrea Friesen
Scotty & Peter Gillette
Nancy Hovanes
Peggy Hunter & Douglas Wallace
Representative Phyllis Kahn
Jeanne Rowekamp
Kaminski
Amy & Ken Kaminsky
John & Nan Kari
Margaret Mousley Kielty
Peter Leach & Nan Skelton
Darlene Lickness
Rae Lundquist
Angie & Raymond McMullen
Kathryn Anne Mack
Janet Martin
Judith Mattison
Mary Ann Miller
Carrie Mortrud
Lila Nelson
Diane Q. Noble
Teresa Paschke
Senator Lawrence Pogemiller
Cindy Pratt
Jenise Rowekamp
Martha Russell

Jan Schieffer
Jan Sedgewick
Greg Skudlarek
Ann Somers
Kenji & Debra Tachibana
Dawn Tomlinson
Paula Vesely
Barbara Wieman in memory of Eleanor Mondale Poling
Maria Ann Youngs

JOAN MONDALE GALLERY FUND

Peggy Baldwin
Marcella Edmund
Ann Ribbens
Maria Ann Youngs

PAT O'CONNOR LIBRARY FUND

Anonymous (1)
Jane & John Connett
Mary & Edward Holland in honor of Nancy Mambi
Karin Knudsen
Kristi Kuder
Minnesota Contemporary Quilters
Margaret O'Connor
Diane M. Swallen

TEXTILE MOBILE

S.L.Q. Long Arm Machine Quilters
Su Skog

Student on Feed the Fibers field trip viewing *Fireflies* by Anita Jain.



IN-KIND & SPONSOR GIFTS

BUSINESSES

3 Kittens Needle Arts
 Adsoka, Inc.
 A Sheepy Yarn Shoppe
 Amazing Threads
 Arran Technologies
 Beadniks of Minnesota
 Bear Patch Quilting Co.
 Bruegger's Bagels
 Café Latte
 Coca Cola North America
 Cupcake
 Domacin Restaurant & Wine Bar
 Downtown Allegra Print & Imaging
 Dunn Bros Coffee
 Fabric Town
 Four Seasons Quilts
 Knits & Pearls
 Linden Hills Yarns & Textile
 Design LTD.
 Miller Upholstery
 Prospect Park East River Road
 Improvement Association
 Prospect Park Properties

Sewtropolis
 Sharrett's Liquor Store
 Sorella Wine & Spirits
 Steve Bye Photo
 Steven Be: A Yarn Garage Workshop
 Threade Bear
 Trader Joe's
 The Valspar Foundation
 The Yarn Garage

INDIVIDUALS

Grace Cressy
 Jennie Clarke
 Nancy Fulton
 Dick Gilyard
 Peggy Hunter & Doug Wallace
 Eric Lynn Carnell
 Joyce Melander-Dayton
 Margaret Miller
 Theresa Rooney
 Sheryl Schwyhart
 Ann Sisel
 Brad Van Gorder
 Sherri West

AWARD AND EVENT SPONSORS

Cave Paper
 Downtown Allegra Print & Imaging
 Nancy Fulton
 Bonnie Hanson
 Tina Hughes
 Peggy Hunter
 Jacquard
 Margaret Anderson Kelliher
 Sue Kmetz
 Larry Olds & Family
 Nancy Onkka
 Park Midway Bank, N.A.
 Mimie Pollard & Alden Drew
 Profile Music Management, LLC
 Erica Spitzer Rasmussen
 Nan Sorensen
 Spoonflower
 Ruth Stephens
 Wellington Management, Inc.
 Sherri West



Below: Exterior view of Holiday Show & Sale. **Opposite:** Yarn bombing at International Surface Design Conference DIY Festival.



BOARD OF DIRECTORS

Ruth A. Stephens, President
 Peggy Hunter, President-Elect
 Ann Novacheck, Treasurer
 Nancy Onkka, Secretary
 Marty Allen, Governance/Fundraising
 Margaret Anderson Kelliher, Member at Large
 Nancy Fulton, Community Forum/Facility Task Force
 Richard Gilyard, Facility Task Force
 Bonnie Hanson, Marketing
 Tina Hughes, Strategic Planning/Facility Task Force
 Sue Kmetz, Finance
 Erica Spitzer Rasmussen, Programs & Services
 Nan Sorensen, Fundraising
 Karen Weiberg, Membership/Facility Task Force
 Sherri West, Fundraising

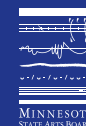
STAFF

Margaret Miller, Executive Director
 Nancy Killmer, Volunteer/Membership Manager
 Renay Leone, Operations Director
 Nancy Mambi, Librarian
 Carolfaye Meadows, Shop and Event Manager
 Becka Rahn, Education Manager
 Sheryl Schwyhart, Gallery Manager
 John Stein, Financial and Building Manager
 Margret Swanson, Development Director
 Marjorie Ford Sethna, Membership Assistant
 Melisa Wahlstrom, Education Assistant & Shop Associate

STUDENT WORKERS

Crystal Kittrell, Shop Associate

We do our best to maintain accurate member and donor records. Please contact us if your name or contribution was not recorded correctly.



This activity is made possible in part by a grant provided by the Minnesota State Arts Board through an appropriation by the Minnesota State Legislature from the State's general fund and its arts and cultural heritage fund with money from the vote of the people of Minnesota on November 4, 2008.

Front cover top: *Lingering on Blue* by Joyce Melander-Dayton from *Constructions in Concert*.
 Front cover bottom: *Fault Line* by Jane Kenyon from *Transformation*.
 Back cover top: Detail of *Nebulae* by Kristina Fjellman from *Spaces Between*.
 Back cover bottom: *Edges Have Edges* by Renay Leone from *A Common Thread*.



 **Textile Center**
A national center for fiber art

3000 University Ave SE
Minneapolis, MN 55414
www.textilecentermn.org

